

NEW!

INNOVATIVE OPERATING CONCEPT

via TABLET PC

Product Highlights

- Menu-guided operation via a **7-inch Tablet PC** with Android app and Bluetooth connection
- Faster, **automatic processing** of all active tests including function test with real-effective power display in just one test step
- Inspection of the grid connection to PE connection and **automatic shutdown** with dangerous residual current of the test object
- **Data input** via the tablet camera with barcode and QR code scanner function and photos of the test object
- **Data exchange** with the PC via tablet and PC coupling (Android standard)
- **Storage** of the master and test data in a SQLITE3 database in the device
- Automatic generation of **PDF reports**
- **Detection of the test object** with a repetition test and automatic setting of the previously defined parameters for the test



Appliance Tester TG omni 1

With combinable measurement modules

for testing safety measures in accordance with

- DIN VDE 0701-0702

DGUV Regulation 3 (BGV A3)

- IEC/EN 60974-4 / DIN VDE 0544-4

Arc Welders

- IEC/EN 62353 / DIN VDE 0751-1

Medical Devices and Systems



Measurements according to standard

Protective conductor resistance	0.000 ... 4.000 Ω Open-circuit voltage 10 V Test current 200 mA DC / optional 10 A DC
Insulation resistance	0.00 MΩ ... 20.00 MΩ Measurement voltage 250 V, 500 V Short-circuit current 1 mA
Integrated residual current shutdown	Differential current > approx. 25 mA
Substitute leakage current	0.00 mA ... 20.00 mA Open-circuit voltage approx. 230 V
Differential current in accordance with DIN VDE 0404-4 for correct evaluation of the harmonics	Test socket: 0.00 mA ... 20.00 mA Differential current clamp DI40 (optional): 0.00 mA ... 40.00 A
Touch current	0.000 mA ... 4.000 mA
Voltage	0.0 V ... 450.0 V AC
Current	0.00 A ... 20.00 A Differential current clamp DI40 (optional): 0.00 A ... 40.00 A
Total power	0 W ... 4.000 W
Protective conductor monitoring	Voltage N-PE > 30 V Floating function via finger contact
Interface to Tablet	Bluetooth
Memory, real time clock	Tablet memory (internal + SD card), Tablet clock
Voltage measurement via probe	0 V ... 400 V AC
Test procedures	PC I, PC II active/passive (with or without main), permanent connection, extension cable, individual measurement

Technical characteristics

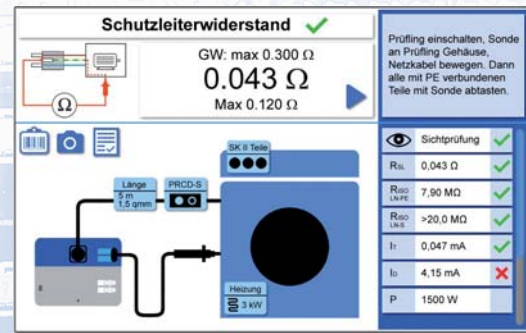
Measuring ranges for functional test	
Voltage	190 ... 250 V AC ± 1 %
Current	0 ... 16 A AC ± 2 %
Active power	0 ... 3700 W ± 2 %
General technical data	
Display	7-inch Tablet PC, 1,024 x 600 pixels
Measurement accuracy	± (5% of meas. value + 1% of end value)
Memory capacity	Tablet internal memory + SD card
Power supply	230 V AC, 50 Hz, 10 VA
Degree of pollution	2
Overvoltage category	CAT II 300 V
Protection degree	IP 20
Electrical safety in accord. with	EN 61010-1 / VDE 0404 / VDE 0411
Dimensions	300 x 250 x 130 mm (W x D x H)
Weight (incl. accessories)	3.1 kg

Optional accessories

Description	Order Number
Tablet PC 7-inch, WLAN, with pre-installed app and pre-configured	79200 19000
Current clamp for diff. current / current measur. 0 ... 40 A	79200 19010
Active three-phase adapter 32 A	79200 18691
Passive three-phase adapter 16 A / 32 A	79200 18690
Adapter for extension cables	79200 18680
Adapter for appliance couplers (IEC C14)	79200 18660
Brush probe for testing of rotating parts	79100 86049
12x adapter for medical devices	61000 01001
Test clip 4 mm red	79200 19020

Menu guidance

Example for testing protective conductor resistance:



screenshot

Operation and functions

- Data transfer tablet device tester via **Bluetooth**
- Direct scanning of **barcode/QR** code via tablet camera app
- **Photos** of test object can be implemented directly in the test protocol
- Generation of **PDF** test protocols in the tablet
- **Transfer** of PDF test protocols to the **PC or printer** using standard Android tools

Options

Option 10A

This option makes it possible to measure the protective conductor resistance with a test current of 10 A DC.

Option ARC

With this option, arc welders can be tested in accordance with DIN VDE 0544-4 / EN/IEC 60974-4. The current source is loaded via an integrated electronic potentiometer.

Option RCD 30 mA / RCD 500 mA

With this option, RCDs of types A, B (sensitive to all types of current), PRCD, PRCD-S and PRCD-K can be tested in construction power distributors or extensions (10 mA to 30 mA or 10 mA to 500 mA). The trigger current and the trigger time are tested and documented. For types PRCD-S/K, the additionally installed person protection functions are tested.

Option MED

This option supplements the already extensive test options by offering measurements and test procedures for medical devices with application parts of type B, BF and CF in accordance with the DIN VDE 0751-1 / EN 62353 norms.

Order informations

Description	Order Number	Appliance Tester / Options	Order Number
Tablet PC 7-inch, WLAN, with pre-installed app and pre-configured	79200 19000	TG omni 1 Basic Unit with App and Measuring Module for DIN VDE 0701-0702, without Tablet PC	66000 00000
Current clamp for diff. current / current measur. 0 ... 40 A	79200 19010	Options (see above)	
Active three-phase adapter 32 A	79200 18691	10 A	
Passive three-phase adapter 16 A / 32 A	79200 18690	ARC	
Adapter for extension cables	79200 18680	RCD 30 mA	
Adapter for appliance couplers (IEC C14)	79200 18660	RCD 500 mA	
Brush probe for testing of rotating parts	79100 86049	MED	
12x adapter for medical devices	61000 01001	as Measurement Modules - freely selectable and in any combination	
Test clip 4 mm red	79200 19020		