

LK 75

Quasi-analogue bar graph meters
75 x 38 mm

Bar graph displays serve to display measurement signals visually. It is generally possible to connect sensors directly, or via measuring transducers. Depending on the visual resolution of the values to be displayed, bar graph displays are subdivided into trend indicators, overview indicators, and measuring instruments.

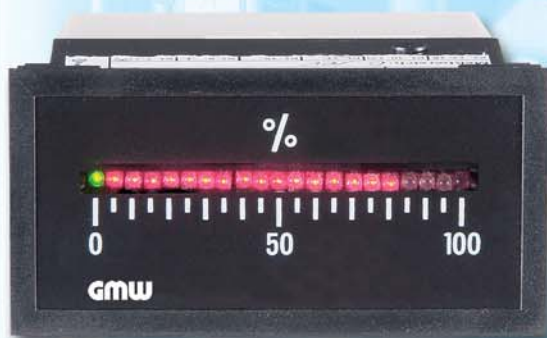
All measured values at a glance

- Electronic panel-mounted measuring instrument with LED line
- 21 individual LEDs
- LED colours freely selectable
- Dot or bar display selectable
- Brightness setting via adjustable voltage
- Over range display via flashing LEDs
- Horizontal or vertical installation possible
- Installable in any location, vibration-resistant
- Front dimensions: 75 x 38 mm
- Installation depth: 43 mm

Regulations and standards

Our bar graph displays comply with the regulations defined by the European Directives 73/23/EEC and 89/336/EEC, as verified by compliance with the following standards:

- DIN/IEC 61 554 (housing)
- IEC/EN 61 010-1:2001, VDE 0411 Part 1(safety regulations)
- IEC/EN 61 326-1/+A1 (interference resistance)
- IEC/EN 61 326-1/+A1 (emitted interference)
- EN 60 529 (protection class)



Technical characteristics – LK 75 bar graph displays

Display		Supply voltage	5 V DC, not galvanically isolated
Type	21 round LEDs (2.5 mm diameter)	Working temperature	0 to 50 °C
Light colour	Red (other colours available on request)	Storage temperature	-20 to +70 °C
Over range display	Flashing	Current consumption	Max. 250 mA with bar display Max. 50 mA with dot display
Resolution	5%	Housing	Closed, black thermoplastic
Scale		Scale faceplate	Black plastic
Format	75 x 38 mm, vertical or horizontal		
Scale length	Approximately 51 mm		
Scale colour	Black or white		
Measuring ranges			
DC voltage	0...60 mV to 0...200 V DC Input resistance 50 kΩ/V		
DC current	0...1 mA to 0...200 mA, 4...20 mA DC Voltage drop via shunt: 200 mV		